



APS 2013 MEETING

21 - 23 April 2013

(Version – 14 March 2013)



Sir Thomas Brisbane Planetarium

Brisbane Botanic Gardens, Mt Coot-tha;
Mt Coot-tha Road, Toowong, Brisbane

The *Australasian Planetarium Society 2013 Meeting* will present a unique opportunity to experience the upgraded Brisbane Planetarium on the eve of its 35th anniversary. The Planetarium will re-open to the public during the Easter holidays following major upgrades to the Cosmic Skydome and display areas. The Cosmic Skydome was fitted with a new Astro-Tec dome and is undergoing other upgrades by Sky-Skan. It will also have the first Ohira Tech *Megastar* optical star projector in the APS region.

A wealth of fulldome content will be shown at APS 2013. From Australia we have *Dark* and *Jangurna Story*, while overseas content includes programs recently released or about to be released from Spitz, Sky-Skan and the Boston Museum of Science. Also featured will be entries from the Jena Fulldome Festival and DomeFest 2012. This is an excellent opportunity to network with others and experience live content.

The **APS AGM** for financial members will be held on the Monday afternoon at 4pm. Please note that only financial APS members will be entitled to vote at the AGM. All members will receive renewal notices in the coming week. *Non-members may attend and speak to the meeting only at the discretion of the APS executive.*

The planetarium demonstrations are open to members and non-members. The sessions are free for all members. Non-members may attend at A\$30 for a half-day, A\$50 (full day) or A\$70 (both days) – payable on the day. Morning and afternoon teas will be provided. Lunches will be at own expense. The **APS Dinner** on Monday night will be free to non-commercial members thanks to generous sponsorship by Sky-Skan, which is also assisting with showing many of the fulldome programs from various producers from around the world. All APS sessions are in the Cosmic Skydome.

Enquiries specific to the presentation facilities should be directed to:

Mark Rigby at mark.rigby@brisbane.qld.gov.au

Peter Firth at peter.firth@brisbane.qld.gov.au

Duncan Waldron at duncan.waldron@brisbane.qld.gov.au

We look forward to seeing you in Brisbane!

Best regards,

Mark Rigby

Curator, Sir Thomas Brisbane Planetarium

PRELIMINARY PROGRAM

SUNDAY	21 APRIL 2013
18:30 – 19:30	Martin Ratcliffe, Sky-Skan's Director of Professional Development, presents an update of developments in <i>DigitalSky2</i> for Sky-Skan customers only. (Mini Theatre). Arrive at 6pm. Contact Jack White to register – white@skyskan.com
MONDAY	22 APRIL 2013
8:00 – 8:45	Coffee/Tea in the Planetarium Foyer.
8:45 – 8:55	Welcome in the foyer by Brisbane Planetarium Curator Mark Rigby - comments on the planetarium's upgrades; move to Cosmic Skydome.
8:55 – 9:00	Welcome by APS President Warik Lawrance, Melbourne Planetarium
9:00 – 9:05	Brisbane Planetarium projection dome upgrade – videos and images.
9:05 – 9:10	IPS 2012 Intro Reel (Cosmic Skydome) The Introduction used at IPS 2012 in Baton Rouge in July 2012.
9:10 – 9:40	Dark – A fulldome movie that explains and explores the nature of dark matter. Narrated by Dr Alan Duffy of the <i>International Centre for Radio Astronomy Research</i> at the University of Western Australia. Dark was directed by Peter Morse, Frontier Film-maker and Visualisation Consultant, Adjunct Senior Research Fellow, iVEC@UWA. Peter will introduce and describe Dark's production.
9:40 – 10:00	<i>AVAILABLE SESSION</i>
10:00 – 10:25	Dynamic Earth from Spitz, Inc
10:25 – 10:50	Morning Tea
10:50 – 11:20	DigitalSky2 Content – 2013 Steve Savage, President of Sky-Skan Inc, presents the latest content developed for <i>DigitalSky2</i> .
11:20 – 11:50	Jena Fulldome Festival – Best of Reel – Germany/International
11:50 – 11:55	<i>Stretch time</i>
11:55 – 12:15	Megastar-IIB optical star projector demonstration. The first Megastar in the Australia/New Zealand region and the second in the southern hemisphere.
12:15 – 12:40	Perfect Little Planet – Clarke Planetarium, USA
12:40 – 13:45	Lunch – provided – adjacent Botanical Café.

PRELIMINARY PROGRAM

13:45 – 14:15	<i>It's not the Solar System you think you know.</i> Martin Ratcliffe, a Past President of the International Planetarium Society and Sky-Skan's Director of Professional Development, will use <i>DigitalSky2</i> to simulate the Nice model of Solar System formation, relating that to the story of Pluto, Saturn's moons, asteroids, comets and NEO's.
14:15 – 14:50	<i>Dream to Fly</i> – Copernicus Science Centre, Warsaw, Poland
14:50 – 14:55	<i>Stretch time</i>
14:55 – 15:20	<i>AVAILABLE SESSION</i>
15:20 – 15:50	<i>Moons: Worlds of Mystery</i> – Boston Museum of Science
15:50 – 16:00	<i>Afternoon tea</i>
16:00 – 17:00	<i>APS AGM</i> – APS financial members only; Mini Theatre.
17:00 – 19:00	<i>Free time</i>
19:00	Pre-Dinner drinks at individual purchase – nearby dinner venue TBA.
19:30	<i>APS 2013 Dinner</i> – Sky-Skan sponsored.
TUESDAY	23 APRIL 2013
8:15 – 9:00	Coffee/Tea in Foyer.
9:00 – 9:15	<i>Sir Thomas Brisbane in Largs and Makerstoun, Scotland</i> – Visits to sites by Mark Rigby and efforts to restore his Largs observatory.
9:15 – 9:45	<i>The Near Universe.</i> Martin Ratcliffe presents concepts and motions of our Milky Way Galaxy in the Local Group, and Local Supercluster, using Brent Tully's latest data.
9:45 – 10:10	<i>Supervolcanoes</i> – Spitz, Inc
10:10 – 10:15	<i>Stretch time</i>
10:15 – 10:45	<i>To Space and Back</i> – Sky-Skan with The Franklin Institute.
10:45 – 11:15	<i>Morning Tea</i>
11:15 – 11:45	<i>Solar System Odyssey</i> – Morehead Planetarium & Science Center, UNC, Chapel Hill, USA
11:45 – 12:15	<i>Domefest 2012 Winners Reel</i> – USA/International

PRELIMINARY PROGRAM

12:15 – 12:20	<i>Stretch time</i>
12:20 – 12:45	<i>The Longest Night: A Winter's Tale</i> – Morehead Planetarium & Science Center, UNC, Chapel Hill, USA
12:45 – 13:50	Lunch – provided – adjacent Botanical Café.
13:50 – 14:10	<i>Interact – Southern Hemisphere</i> – Using Sky-Skan's educational show packages developed by the planetarium staff at Lawrence Hall of Science, Martin Ratcliffe demonstrates those that are suitable for use in the southern hemisphere.
14:10 – 14:30	<i>Jangurna Story – Indigenous Tales of the Night Sky</i> (Full dome) presented by Peter Morse
14:30 – 15:00	<i>AVAILABLE SESSION</i>
15:00 – 15:05	<i>Stretch time</i>
15:05 – 15:30	<i>We Are Aliens</i> – National Space Centre, UK
15:30 – 16:00	<i>Earthquake</i> – California Academy of Sciences

VACANT SESSIONS STILL AVAILABLE

There are still vacant sessions and some flexibility. Please contact mark.rigby@brisbane.qld.gov.au.

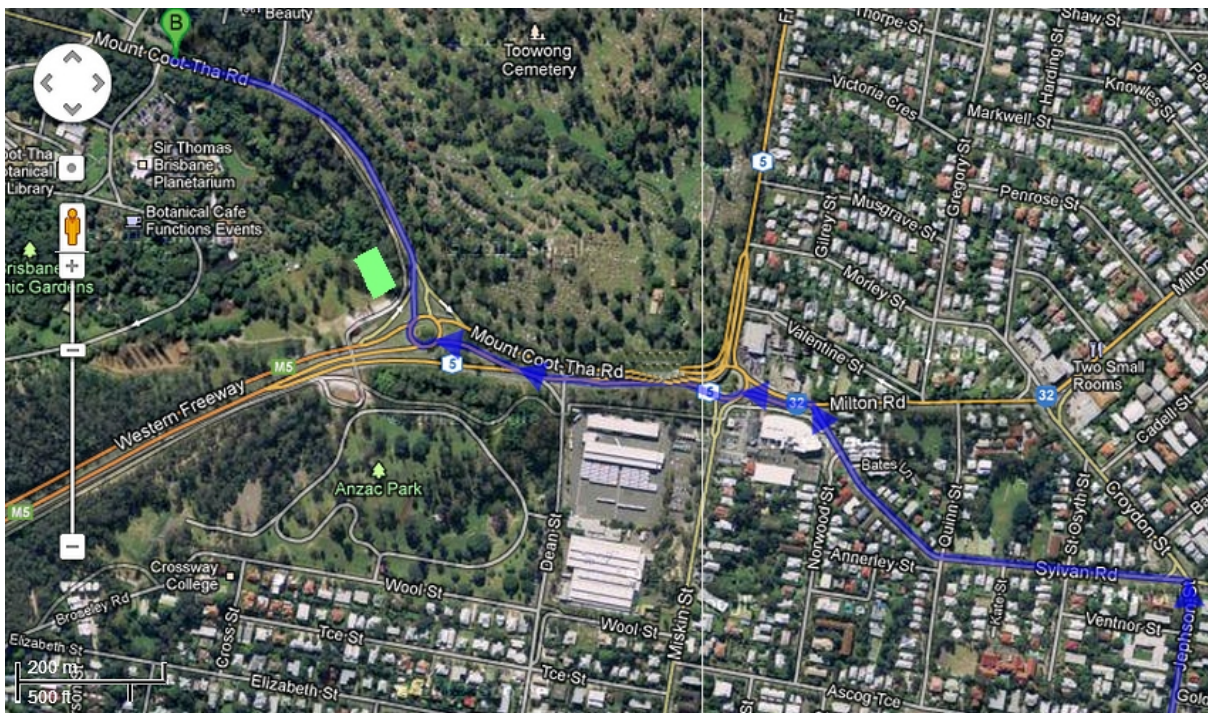
Any institution or vendor that would like to sponsor a lunch at APS 2013 also should contact Mark Rigby.

PRELIMINARY PROGRAM

BRISBANE PLANETARIUM

The Sir Thomas Brisbane Planetarium is located in the Brisbane Botanic Gardens, Mt Coot-tha (not in the CBD gardens), Mt Coot-tha Road, Toowong, on the road up to Mt Coot-tha. Outside of peak time, it is about five minutes drive from central Toowong as indicated on the map below. Stay in the right lanes as you come through the roundabouts and take the Mount Coot-tha Road turn so that the HUGE acoustic shed (marked in green) for the Legacy Way tunnel project is on your left.

DO NOT get onto the Western Freeway otherwise you will have to go all the way to the Moggill Road left turnoff and then stay in the right lane as you go off, then right under the freeway and turn immediately right again to get back on the freeway heading back to the missed turnoff. There is plenty of free parking available right next to the Planetarium with the entrance doors on the side of the building facing the flag poles.



PLANETARIUM COSMIC SKYDOME

The theatre is omni-directional with 135 seats. The dome is 12.5 metres in diameter and the planetarium uses a Sky-Skan fulldome 6-channel system and will have the newly-installed Megastar-IIB optical star projector by the time of APS 2013.

An NEC projector is mounted for normal (e.g. PowerPoint) presentations to a uni-directional audience.

PLANETARIUM MINI THEATRE

The mini theatre has 40 seats, a permanent lectern, an overhead NEC projector, speakers and an electronic whiteboard.

PRELIMINARY PROGRAM

OTHER ITEMS OF INTEREST

The Botanic Gardens can be driven through on weekdays and has 52 hectares of gardens and many walking tracks, as well as the Botanical Café.

The Mount Coot-tha Lookout is only about five minutes drive from the Planetarium. It provides wonderful panoramic views of Brisbane and the Moreton Bay region.

BRISBANE VISITOR INFORMATION

BRISBANE AIRPORT

Information about Brisbane Airport can be found at <http://www.bne.com.au/>

TRANSPORT

For information about getting around in Brisbane, check out: <http://translink.com.au/>

ACCOMMODATION

Listed below is accommodation within a short driving distance of the Sir Thomas Brisbane Planetarium. The first two motels/apartments are near each other in the heart of Toowong, just a very short walk to the major Toowong Village Shopping Centre, which has plenty of food outlets and a supermarket. Rail, bus and taxi services are available from Toowong Village. There are various eating venues in and near the shopping centre.

It is recommended that you contact the motel of your choice and ask for the most up to date tariff as the websites may not list them.

The Jephson Hotel

<http://www.jephsonhotel.com.au/>

63 Jephson Street

Toowong 4066 QLD Australia

This is a new fully-serviced hotel in central Toowong with J's Bar and Restaurant.

It is a very short walk to shops, restaurants, train, buses and CityCat ferries.

Toowong Central Motel Apartments

<http://www.toowongcentral.com/>

38 Jephson Street

Toowong 4066 QLD Australia

(Cnr of Jephson & Lissner St)

28 serviced & air conditioned, self contained "Studio" Apartments.

These apartments are a short walk to shops, restaurants, train, buses and CityCat ferries.

PRELIMINARY PROGRAM

Toowong Villas

<http://www.toowongvillas.com.au/>

9 Ascog Terrace

Toowong 4066 QLD Australia

This self-rated Four* Star Serviced Apartment complex has four Studios and 44 Villas. There are one, two and three bedroom configurations. The complex is in a landscaped resort style gardens. Included in the apartments are a complete kitchen, plus laundry with washing machine and dryer. All villas have either a balcony or courtyard and all villas and studios are air-conditioned. The villas are a slightly longer walk than the other two listings to shops, restaurants, train, buses and CityCat ferries.